

LET'S USE ENERGY USEFULLY

2018-1-IT02-KA229-048029

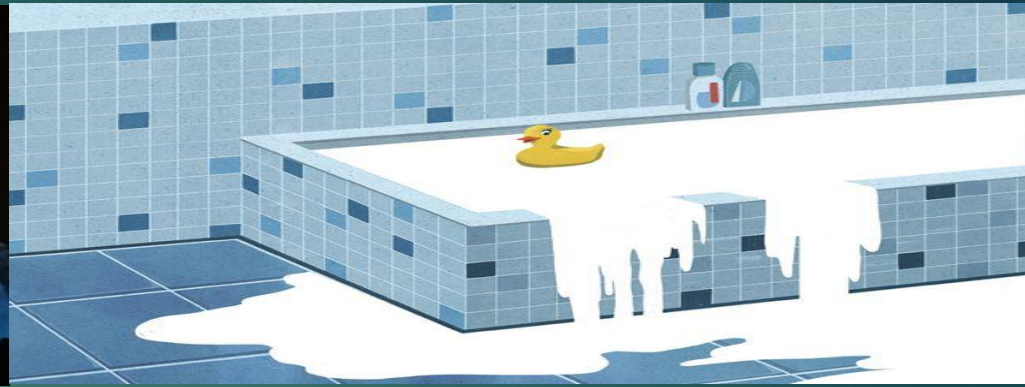
Unsustainable Consumption and Threats



Overconsumption



Should the global population reach 9.6 billion by 2050, the equivalent of almost three planets could be required to provide the natural resources needed to sustain current lifestyles.



Excessive use of water contributes to the global water stress



Despite technological advances that have promoted energy efficiency gains, energy use will grow on another 35 per cent by 2020. Commercial and residential energy use is the second most rapidly growing area of global energy use after transport.



Households consume 29 per cent of global energy and consequently contribute to 21 per cent of resultant CO₂ emissions.

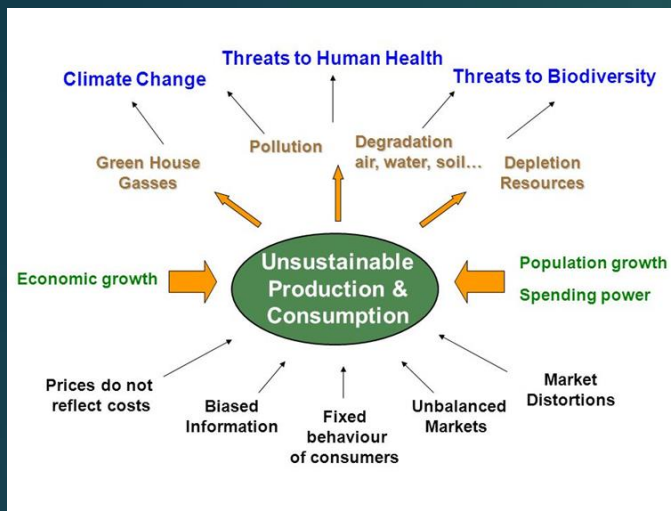


Land degradation, declining soil fertility, unsustainable water use, overfishing and marine environment degradation are all lessening the ability of natural resource base to supply food.

Sometimes because of local policies or bad habits, there is a malfunctionment

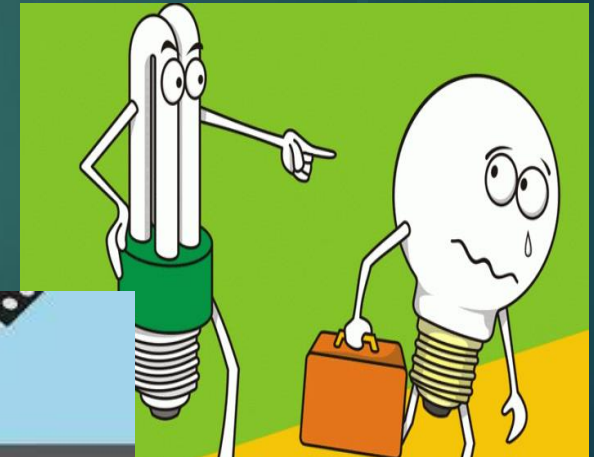


As a result, waste collection and purifiers don't work properly



Source:
http://www.ec.europa.eu/environment/eussd/escp_en.hm

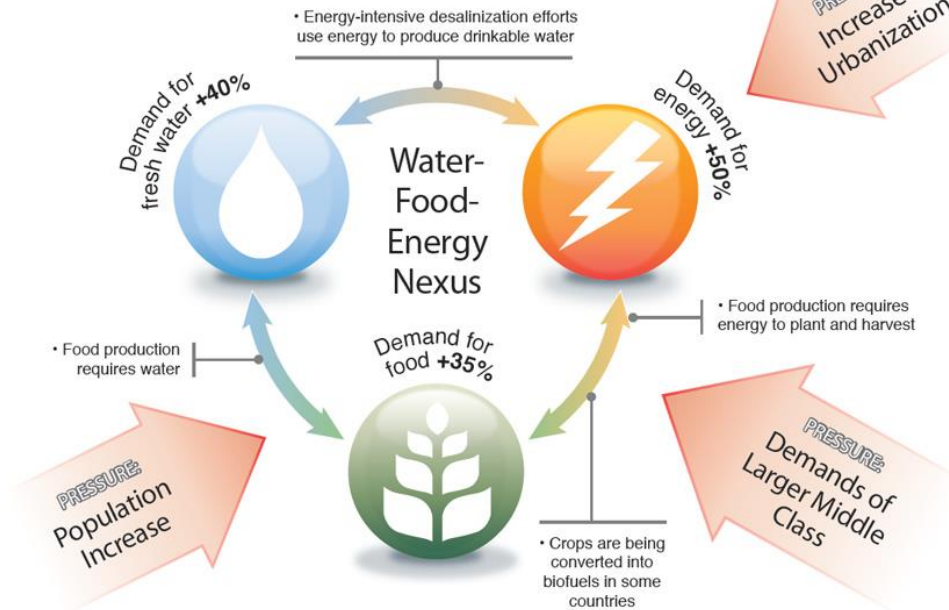
We should change our lifestyle and remember that our well-being is strictly connected to the environmental well-being.



As population grows, pressures mount

And the relationships between food, water, and energy supplies become critical

Because of growth in global population and the consumption patterns of an expanding middle class, in less than two decades three key demands will sharply increase ...



Source: <https://www.newsecuritybeat.org/2014/05/climate-threats-military-leaders-population-growth-natural-resources-key-factors/>

The situation could be solved through use of alternative and sustainable sources of energy



THANKS FOR YOUR ATTENTION



Ch. 7 - PolisJ2013

Edited by ITT Malafarina Soverato

This project has been funded with support from the European Commission. This publication reflects the views only of the author, and the Commission cannot be held responsible for any use which may be made of the information contained therein.